

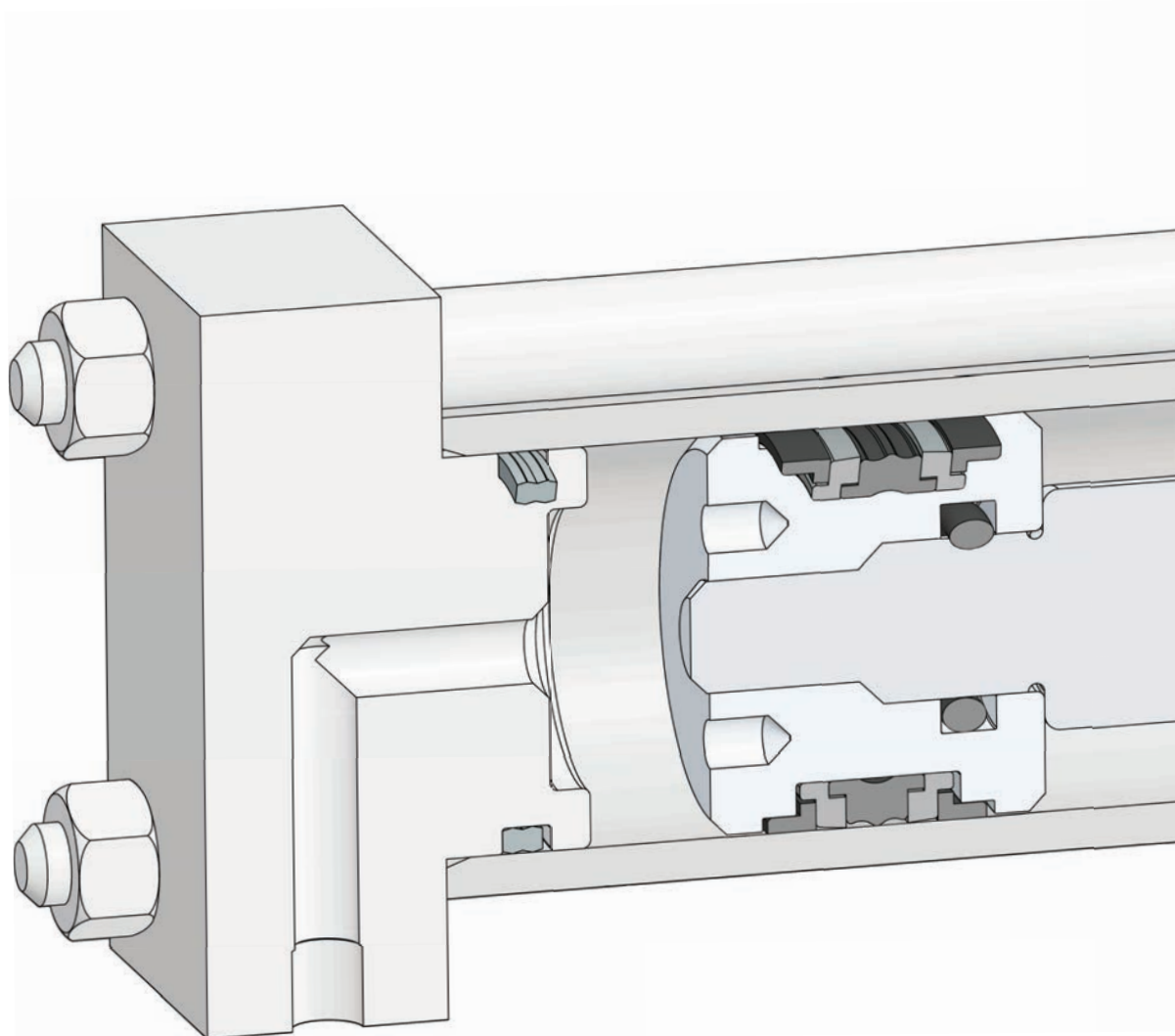


Sealing Solutions for
Plastic Injection Molding
Machines

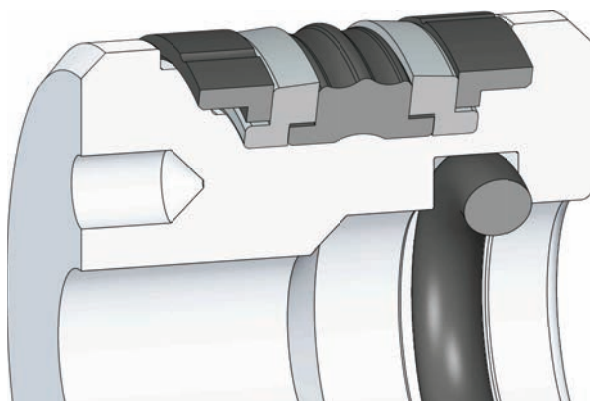
Global
Sealing
Solutions

www.alpkaucuk.com

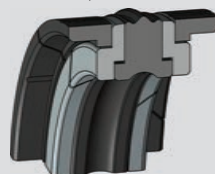
Ejector Cylinder Sealing Elements



- A105 guiding element with high bearing capacity under axial loads.
- Simple groove design.
- Very low friction force compared to competitors.
- O-ring as a static sealing element.



A105 Compact Seal



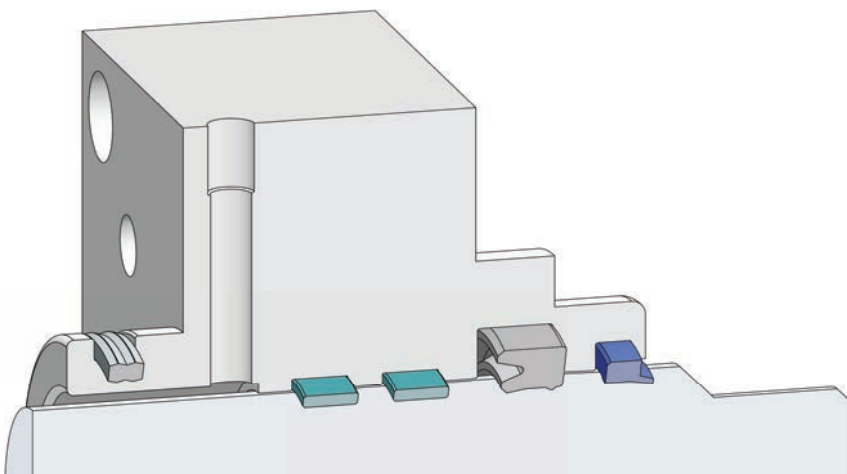
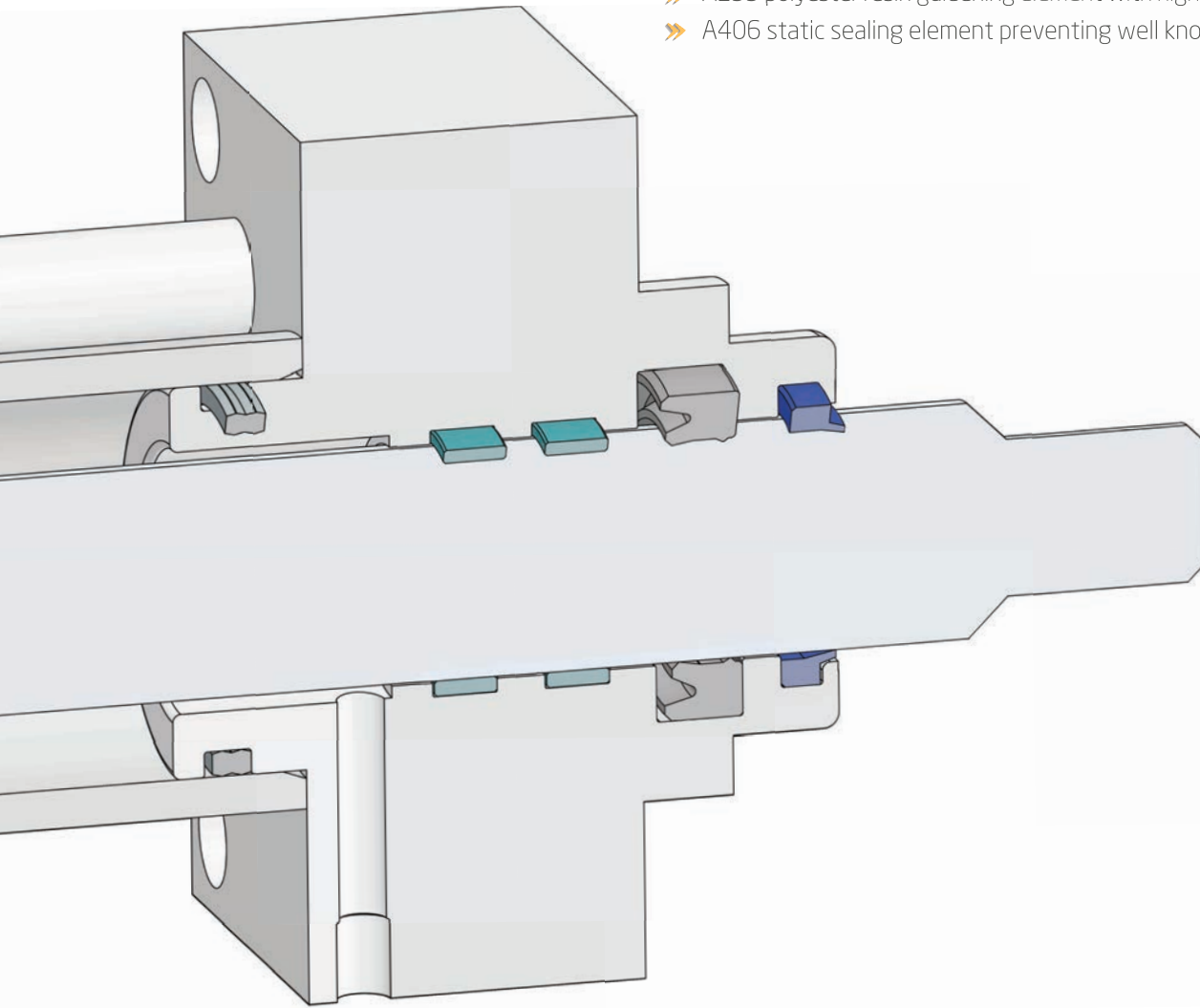
O-Ring



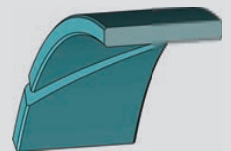
A406 Static Seal



- » Endurance grade TPU material suitable for heavy duty applications.
- » Wide range of dimensions.
- » A255 polyester resin guiding element with high axial load bearing capacity.
- » A406 static sealing element preventing well known O-ring problems.



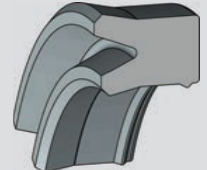
A255 Polyester Resin Guide Ring



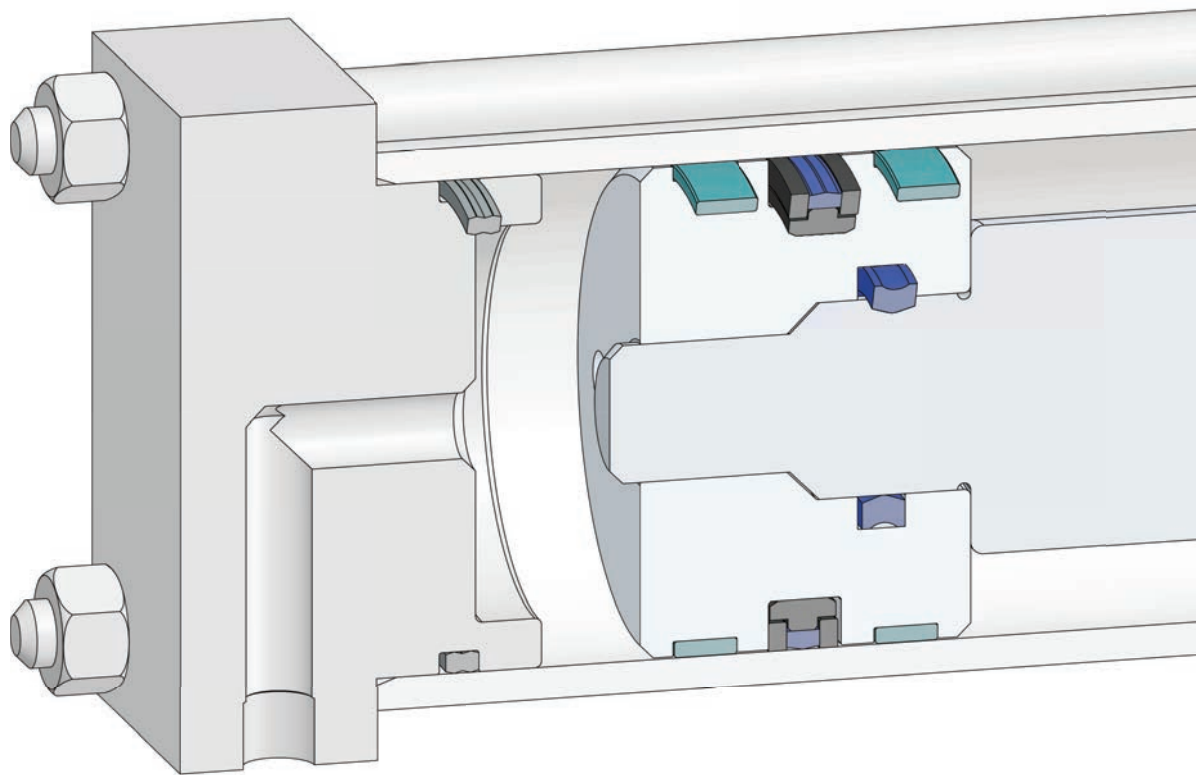
A202 Wiper



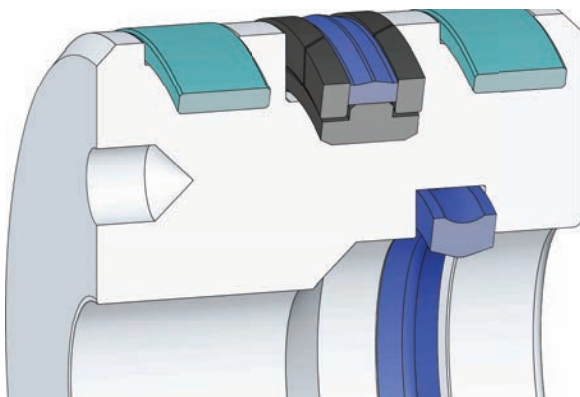
A164 High Performance U-Ring Rod



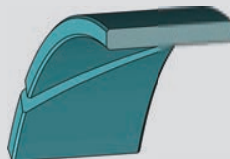
Clamping Cylinder Sealing Elements



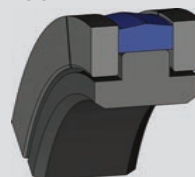
- A255 polyester resin guiding element with high axial load bearing capacity.
- Superior sealing performance.
- A106 piston seals providing cost effectiveness compared to similar products.
- Long service life.



A255 Polyester Resin Guide Ring



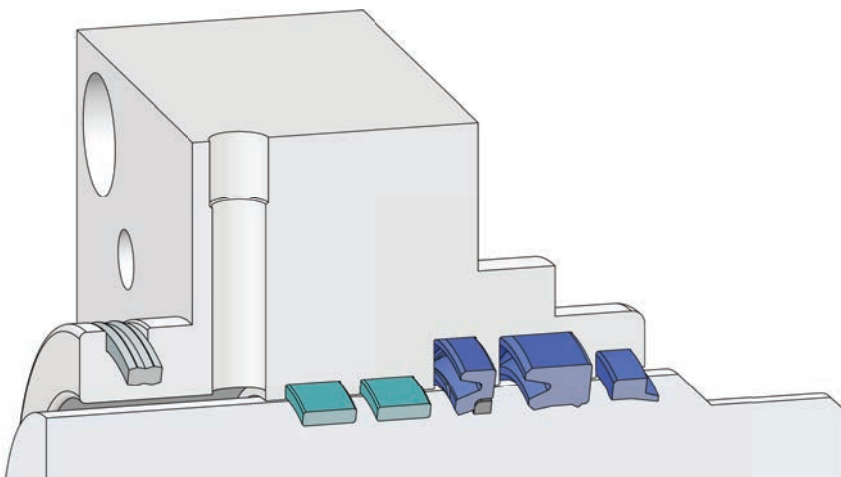
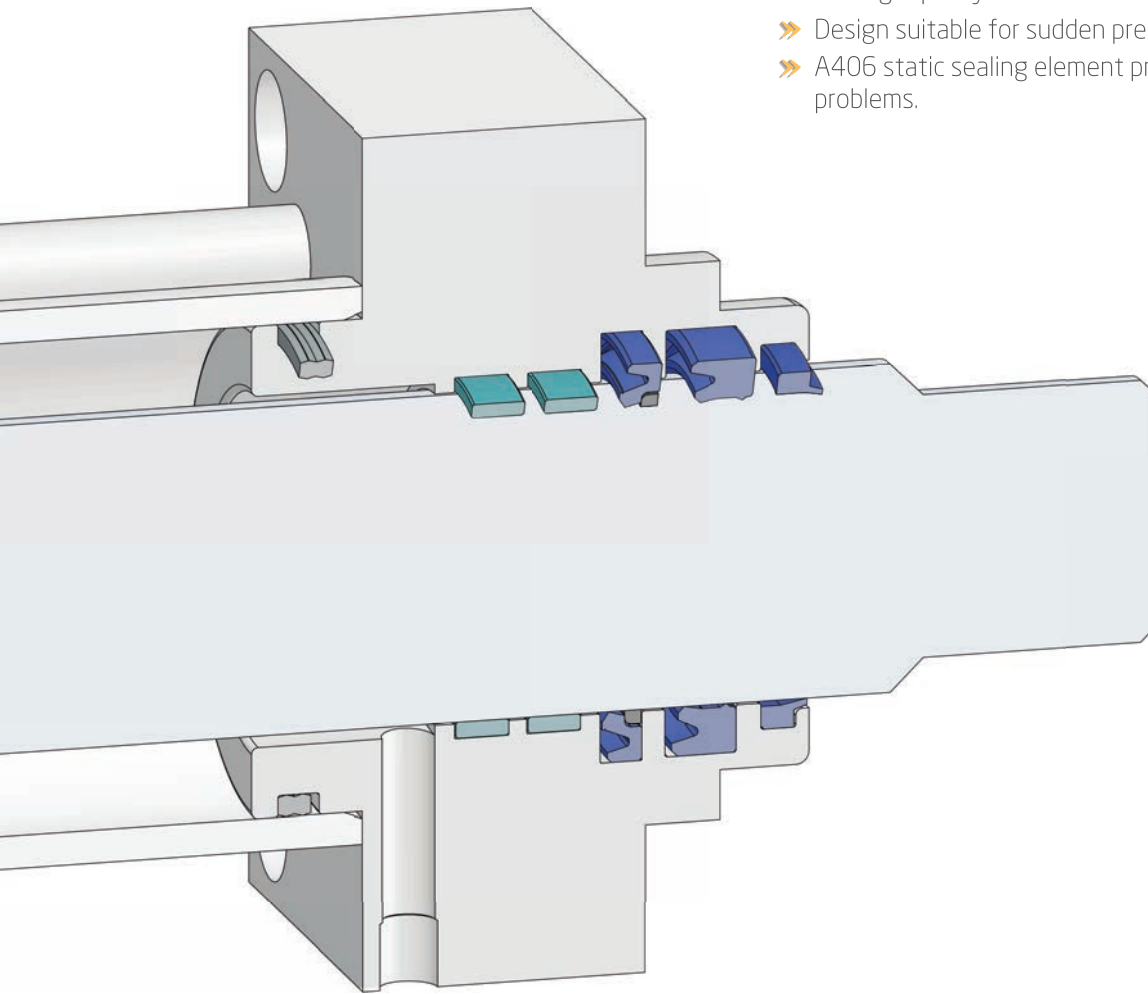
A106 Piston Seal



A403 Cover Seal



- » A154 and A202 with high variety of dimensions.
- » Easy installation.
- » A255 polyester resin guiding element with high axial load bearing capacity.
- » Design suitable for sudden pressure peaks.
- » A406 static sealing element preventing well known O-ring problems.



A406 Static Seal



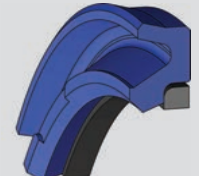
A154 U-Ring Rod



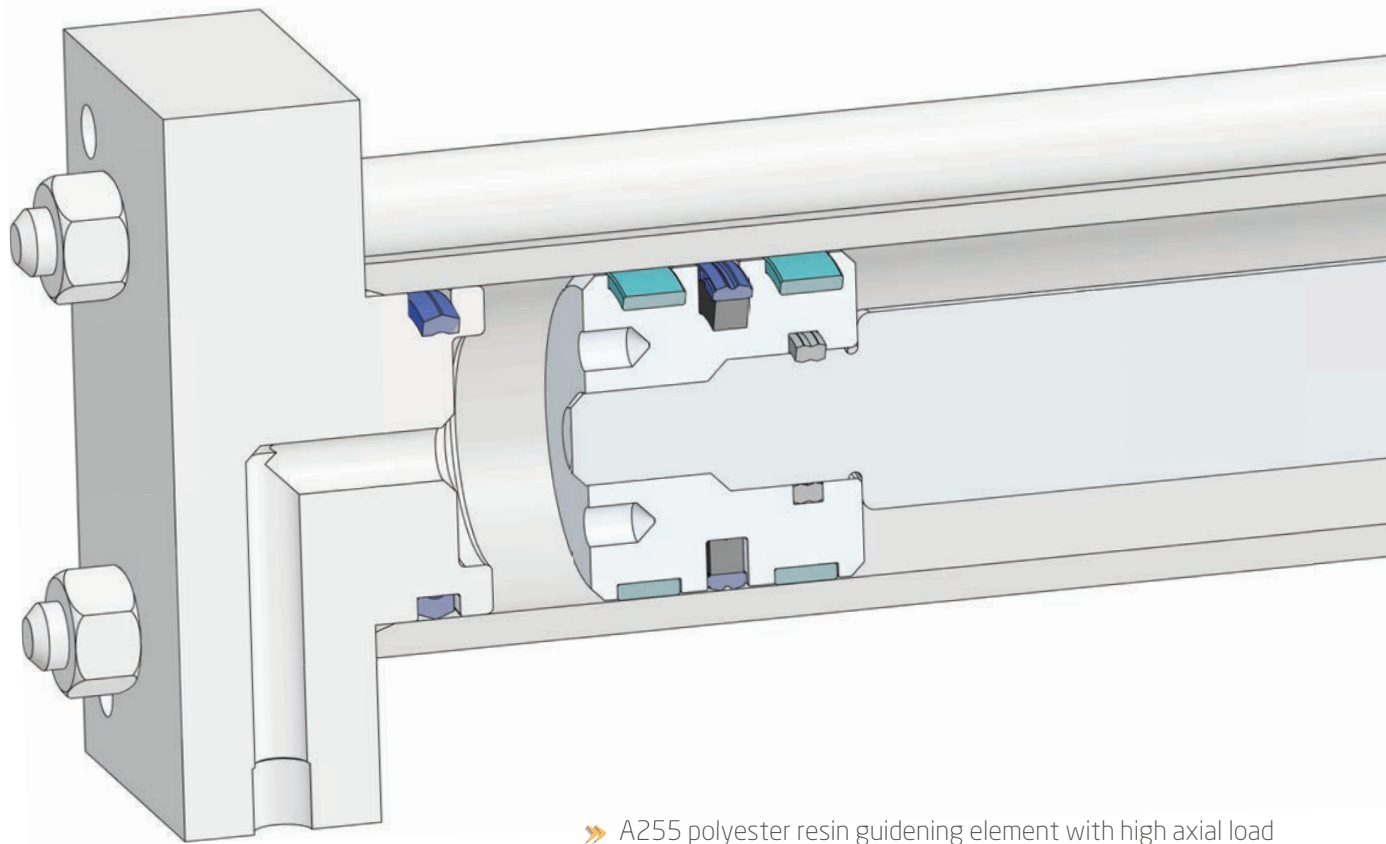
A202 Wiper



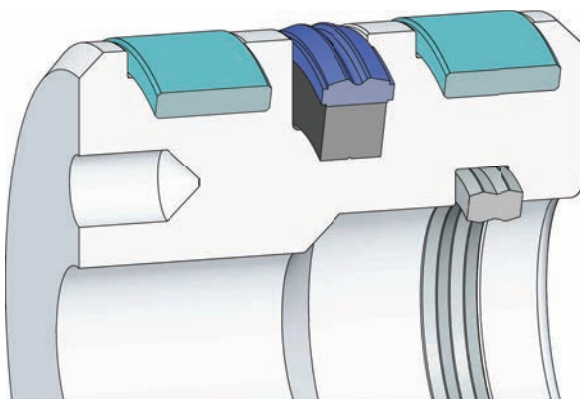
A209 Buffer Ring



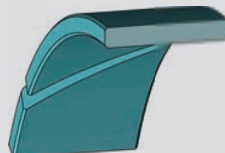
Injection Unit Cylinder Sealing Elements



- A255 polyester resin guiding element with high axial load bearing capacity.
- A110 piston seal with anti-rotation design and low friction force.
- Superior performance in static and dynamic applications.
- Groove design suitable with ISO standards.



A255 Polyester Resin Guide Ring



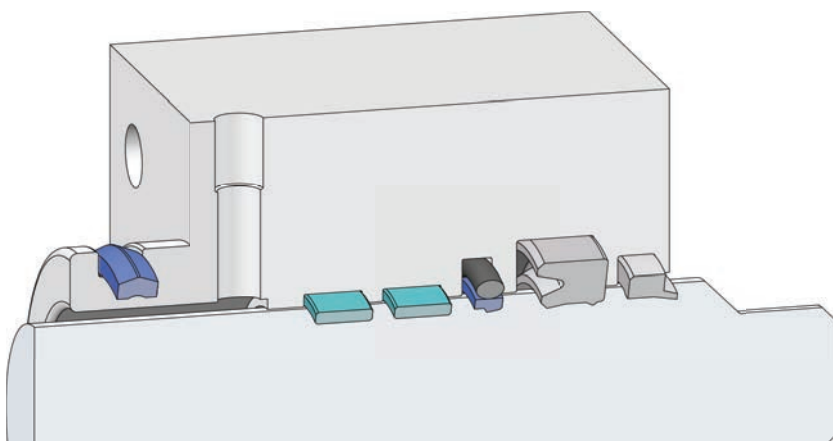
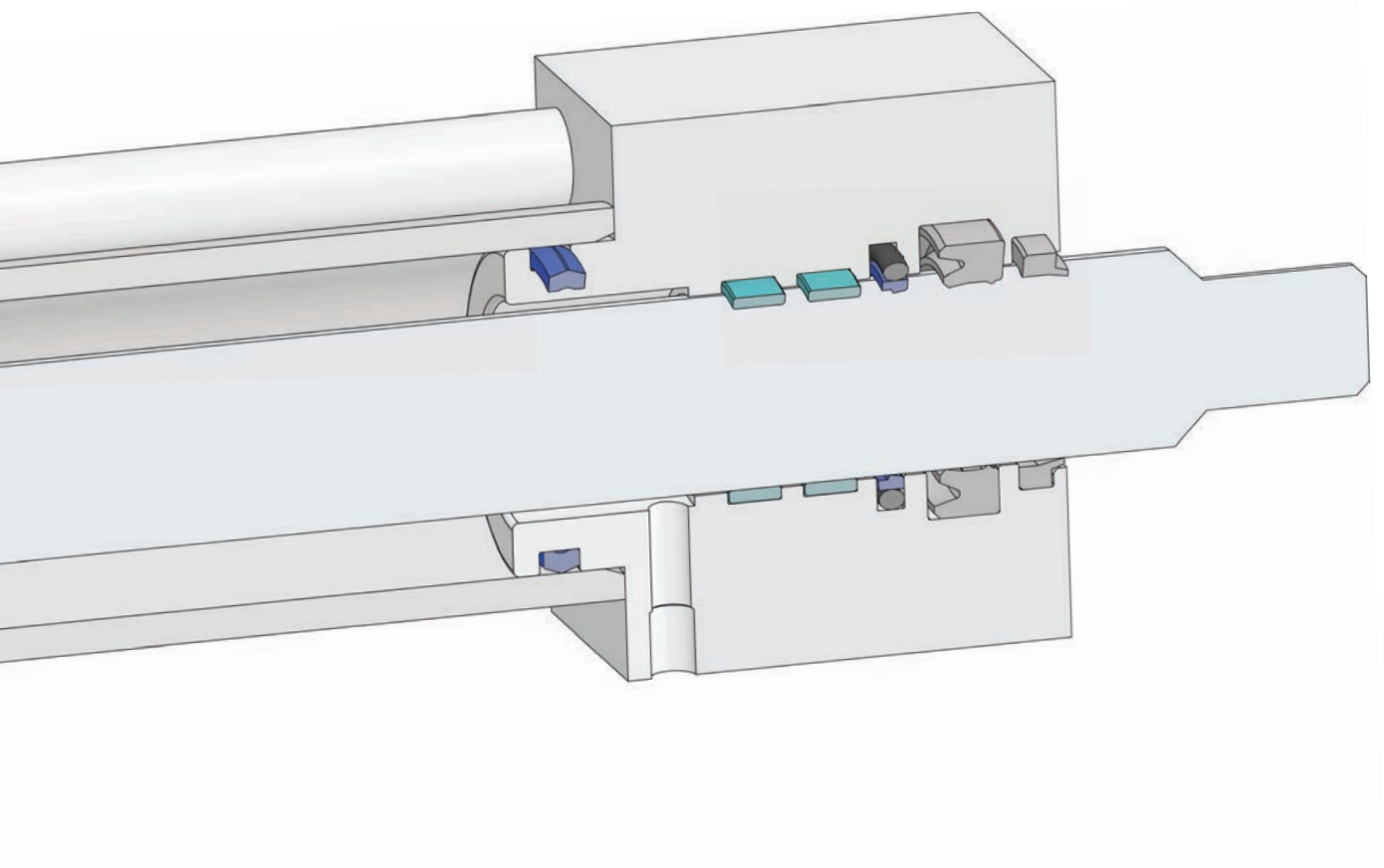
A110 Piston Seal



A406 Static Seal



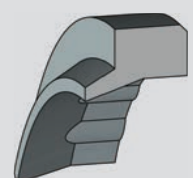
- Endurance grade TPU material suitable for heavy duty conditions.
- Long service life.
- A255 polyester resin guiding element with high axial load bearing capacity.
- Design suitable for pressure peaks .
- A159 rod seals providing price advantage compared to similar products.



A159 Rod Seal



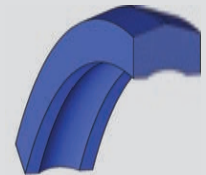
A262 High Performance Wiper



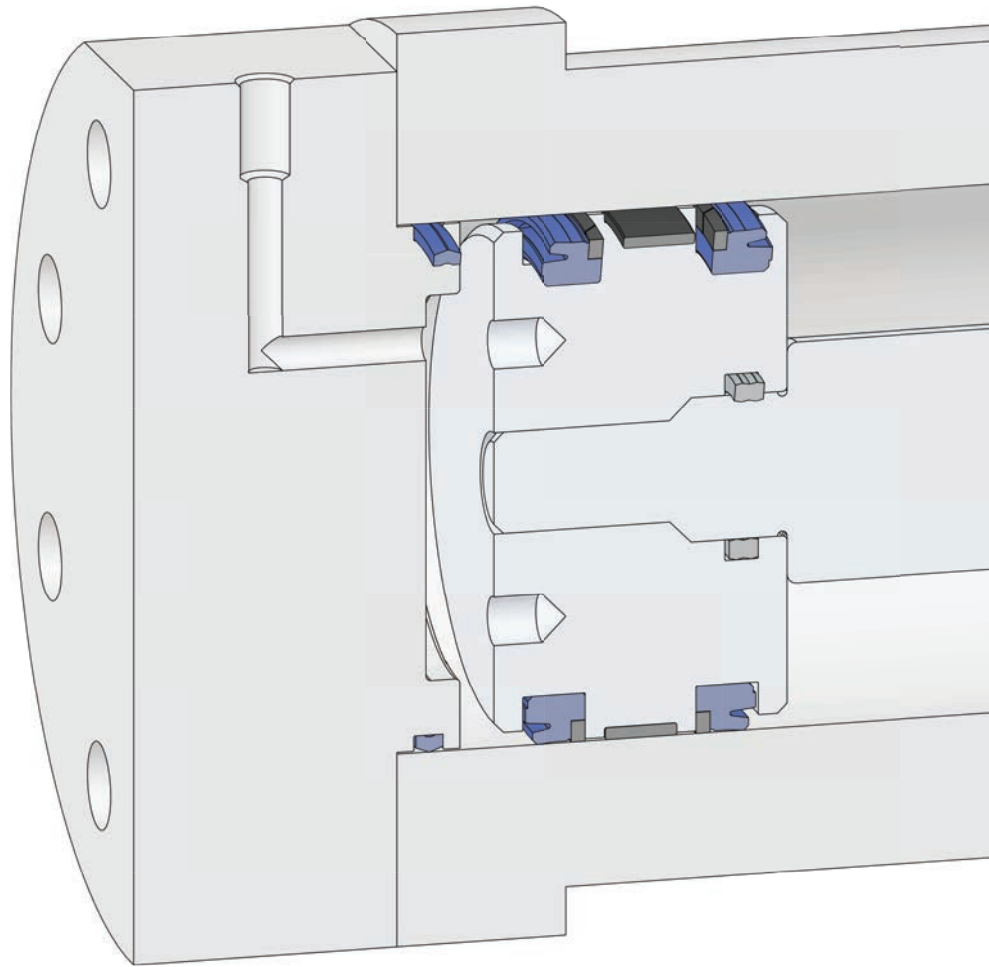
A164 High Performance U-Ring Rod



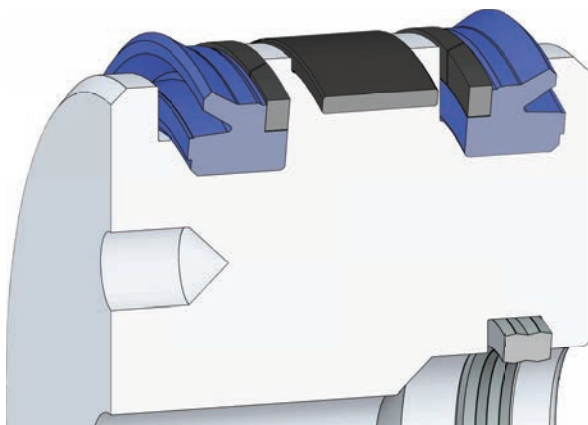
A404 Cover Seal



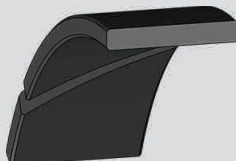
Injection Cylinder Sealing Elements



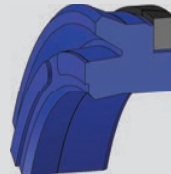
- Easy installation.
- Simple piston design.
- A108 hydrostatic pressure preventing design suitable with high pressure.



A251 Piston Rod Guide Ring

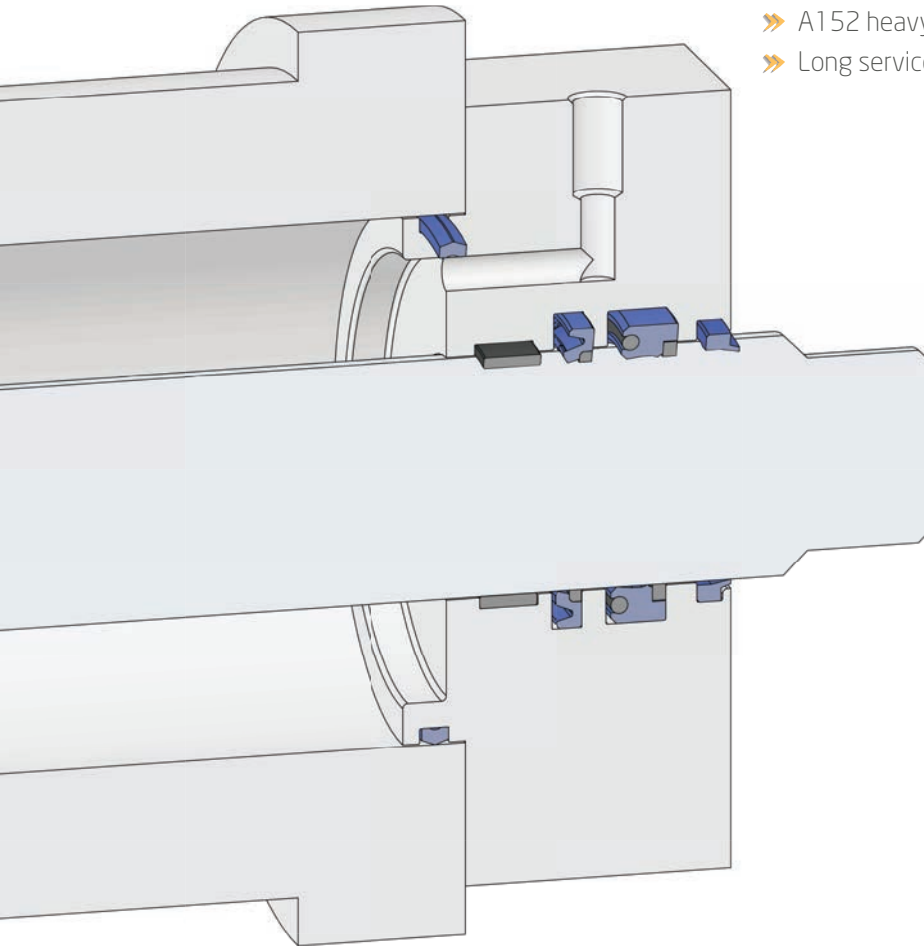


A108 U-Ring Piston

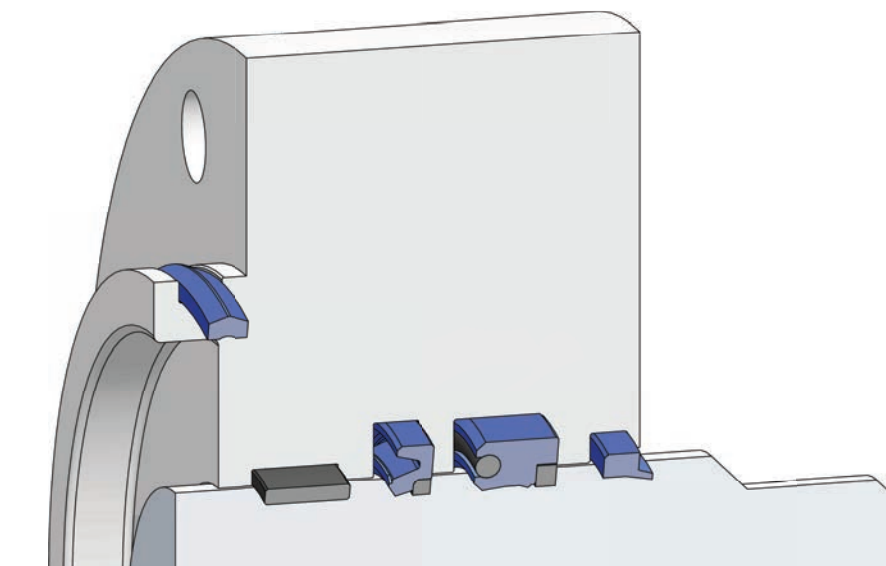


A406 Static Seal





- » Design suitable for pressure peaks.
- » Design providing extra protection against particles coming from the external environment.
- » A152 heavy duty rod seal suitable for high and low pressures.
- » Long service life.



A404 Cover Seal



A152 Heavy Duty U-Ring Rod



A202 Wiper





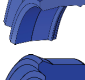

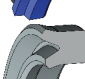





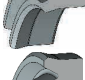

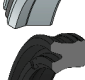







A209 Buffer Ring








HYDRAULIC SEALING ELEMENTS

	A101	U-RING ROD PISTON	NBR PU
	A102	U-RING PISTON	NBR PU
	A103	HEAVY DUTY PISTON SEAL	NBR PTFE+BRONZE POM
	A104	COMPACT SEAL	NBR FABRIC NBR POM
	A105	COMPACT SEAL	NBR TPE GLASS FILLED POM
	A106	PISTON SEAL	PU NBR POM
	A107	ROD PISTON SEAL	NBR FABRIC NBR
	A108	U-RING PISTON	PU POM
	A109	COMPACT SEAL	NBR TPE GLASS FILLED POM
	A110	PISTON SEAL	NBR PU
	A111	PISTON SEAL	PU POM
	A112	PISTON SEAL	NBR FABRIC NBR POM
	A113	PISTON SEAL	NBR SPECIAL FABRIC NBR POM
	A114	PISTON SEAL	NBR TPE POM
	A115	U-RING ROD PISTON	PU NBR
	A120	V-PACK ROD	NBR FABRIC NBR POM
	A121	V-PACK PISTON	FABRIC NBR POM
	A122	V-PACK ROD	NBR FABRIC NBR POM
	A123	PISTON SEAL	NBR PU
	A124	PISTON SEAL	NBR METAL+SPRING
	A127	HEAVY DUTY PISTON SEAL Z CUTTED	NBR GLASS FILLED PA
	A151	U-RING ROD	NBR PU
	A152	HEAVY DUTY U-RING ROD	PU POM NBR
	A153	U-RING ROD	PU POM
	A154	U-RING ROD	PU

HYDRAULIC SEALING ELEMENTS

	A155	ROD SEAL	NBR TPE POM
	A156	ROD SEAL	NBR FABRIC NBR POM
	A157	U-RING ROD	PU
	A158	U-RING ROD	PU
	A159	ROD SEAL	PU NBR
	A161	HIGH PERFORMANCE U-RING ROD	PU
	A162	HIGH PERFORMANCE HEAVY DUTY U-RING ROD	PU POM NBR
	A163	HIGH PERFORMANCE U-RING ROD	PU POM
	A164	HIGH PERFORMANCE U-RING ROD	PU
	A167	HIGH PERFORMANCE U-RING ROD	PU
	A168	HIGH PERFORMANCE U-RING PISTON	PU POM
	A171	HIGH PERFORMANCE U-RING ROD PISTON	PU
	A172	HIGH PERFORMANCE U-RING PISTON	PU
	A175	HIGH PERFORMANCE U-RING ROD PISTON	PU NBR
	A181	U-RING ROD	NBR
	A182	U-RING ROD	PU
	A183	ROD SEAL	PU
	A187	U-RING ROD	PU POM
	A209	BUFFER RING	PU POM
	A269	HIGH PERFORMANCE BUFFER RING	PU POM








WIPERS

	A201	WIPER	PU
	A202	WIPER	NBR PU
	A203 PU	METAL WIPER	PU METAL
	A203 NBR	METAL WIPER	NBR METAL
	A204	WIPER	NBR PU











WIPERS

	A205	DOUBLE WIPER	NBR PU
	A206	HEAVY DUTY WIPER	TPE
	A207	DOUBLE WIPER ROD	PU METAL
	A208	DOUBLE WIPER	NBR PU
	A211	HEAVY DUTY SCRAPER SEAL	PA
	A213	ROD WIPER	PU
	A262	HIGH PERFORMANCE WIPER	PU
	A268	HIGH PERFORMANCE DOUBLE WIPER	PU

GUIDE ELEMENTS

	A251	PISTON ROD GUIDE RING	GLASS FILLED POM
	A254	TELESCOPIC GUIDE RING	POM
	A255	POLYESTER RESIN GUIDE RING	POLYESTER RESIN
	A256	PHENOLIC RESIN GUIDE RING	PHENOLIC RESIN
	ABT	BRONZE-PTFE GUIDE STRIP	PTFE+BRONZE
	AKT	CARBON-PTFE GUIDE STRIP	PTFE+CARBON
	APR	POLYESTER RESIN GUIDE STRIP	POLYESTER RESIN




PTFE SEALING ELEMENTS

	A301	PISTON SEAL	PTFE+BRONZE NBR
	A302	SINGLE ACTING PISTON SEAL	PTFE+BRONZE NBR
	A303	ANTI CONTAMINATION PISTON SEAL	PTFE+CARBON
	A304	ROTARY ROD SEAL	PTFE+BRONZE NBR
	A305	WIPER	PTFE+BRONZE NBR
	A306	PISTON SEAL	PTFE+BRONZE NBR
	A307	ROTARY PISTON SEAL	PTFE+BRONZE NBR
	A308	PISTON SEAL	PTFE+CARBON NBR
	A311	ROD SEAL	PTFE+BRONZE NBR
	A313	ANTI CONTAMINATION ROD SEAL	PTFE+CARBON

STATIC SEALING ELEMENTS

	A401	BACK UP RING	TPE
	A402	FLANGE SEAL	PU
	A403	COVER SEAL	PU
	A404	COVER SEAL	PU
	A405	STATIC SEAL	PU
	A406	STATIC SEAL	PU



WATER PUMP SEALING ELEMENTS

	A703	HIGH PRESSURE WATER PUMP SEAL	SPECIAL FABRIC NBR POM
	A703B	HIGH PRESSURE WATER PUMP SEAL	SPECIAL FABRIC NBR POM CARBON+PTFE
	A705	HIGH PRESSURE WATER PUMP SEAL	SPECIAL FABRIC NBR

PNEUMATIC SEALING ELEMENTS

	A801	PNEUMATIC PISTON SEAL	NBR SHEET METAL
	A802	PNEUMATIC PISTON SEAL	NBR PU
	A803	SHORT STROKE PNEUMATIC PISTON SEAL	NBR
	A804	SINGLE ACTING PNEUMATIC PISTON SEAL	NBR ALUMINUM
	A805	PNEUMATIC PISTON SEAL	NBR ALUMINUM
	A807	PNEUMATIC PISTON SEAL	NBR PU
	A808	PNEUMATIC PISTON SEAL	NBR
	A810	PNEUMATIC PISTON SEAL	NBR
	A851	PNEUMATIC COMBI SEAL	NBR METAL
	A852	PNEUMATIC WIPER ROD SEAL	PU
	A853	PNEUMATIC WIPER ROD SEAL	NBR PU
	A854	HEAVY DUTY PNEUMATIC ROD WIPER	NBR/TPE PU/TPE
	A855	PNEUMATIC CUSHIONING SEAL	PU NBR
	A856	PNEUMATIC ROD SEAL	NBR
	A857	PNEUMATIC WIPER ROD SEAL	NBR PU

O-RINGS

	AOPU	PU O-RING	PU
	AO	NBR O-RING	NBR

Phone:+90 232 328 15 99
Fax: +90 232 328 15 96
E-mail: info@alpkaucuk.com
Address:MPIOSB 7.Cadde No:7
Menemen, Izmir/Turkey

